

Tobacco Product Waste Identification Guide

Butts and Filters



Other Tobacco Products



E-Cigarettes and Vapes



Nicotine Pouches



Cannabis



Multipurpose



User-Defined



Commercial Butts and Filters

Filtered Cigarette Butts

Filter visible on one end, and tobacco on the other. Typically wrapped in paper imprinted with commercial tobacco branding. The paper covering the cigarette butts can come in different colors or sizes.



Intact Filter:

Filter with compact fibers. The paper covering has degraded



Degraded Filter:

Filter starting to degrade. Filters become loose or separated over time



Unfiltered Cigarette Butt:

Tobacco that is wrapped in paper without the presence of a filter. Typically imprinted with commercial tobacco branding

Other Tobacco Products



Cigars:

Tobacco that is fermented and wrapped in a dried tobacco leaf or a material containing tobacco.



Cigar Bands:

Cigar bands are typically found around one end of the cigar and are made from paper, foil, and ink.



Plastic Cigar Tips:

Plastic coverings or caps found at the end of a cigar. Tips can sometimes retain traces of unsmoked tobacco.



Wooden Cigar Tips:

Wooden coverings or caps found at the end of a cigar. Tips can sometimes retain traces of unsmoked tobacco.



Other Holders:

Plastic coverings or caps found at the end of a cigars or cigarettes. Tips can sometimes retain traces of unsmoked tobacco.



Cigarillos:

Tobacco wrapped in a dried tobacco leaf or material containing tobacco. Smaller than regular cigars but typically larger than cigarettes. Sold in packs of 2.

Other Tobacco Products (Continued)



Smokeless Tobacco Product: Snus

A small pouch that contains processed tobacco, designed to be placed between the gum and lip. It is typically a dark brown color, resembling a small tea bag.



Tobacco Advertising:

Any promotional materials aimed at promoting tobacco use. Common materials include printed leaflets or handouts, often displaying captivating visuals, persuasive messaging, brand information, and product discounts.



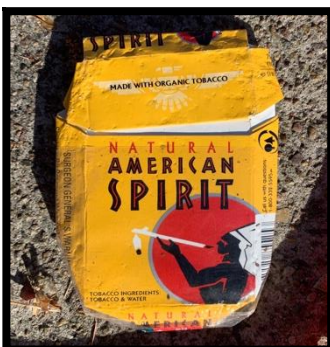
Product Packaging: Cigar Cellophane Wrappers

A transparent, thin sheet made of plastic. Often long and slim in shape. Typically imprinted with commercial branding



Product Packaging: Cigarillo Pouch

Compact and flexible bags with a resealable closure made to hold cigarillos. The bags can be made of plastic, foil, or a combination of both.



Product Packaging: Cigarette Pack

A rectangular container typically made of paper or cardboard material that is used to hold cigarettes. It is often covered with cellophane.

Other Tobacco Products (Continued)



Product Packaging: Cigarette Pack Cellophane

The plastic covering of the cigarette packs. Typically has a gold or silver foil tear strip.



Product Packaging: Snus Packaging

Small containers made of either plastic or metal. The containers often have a hinged or screw-on lid.



Product Packaging: Chewing or Spit Tobacco

Small round or rectangular cans made of metal or plastic, designed to hold cured tobacco in the form of loose leaf, plug or twist. The cans often feature a flip-top or screw-on lid.

E-Cigarettes & Vapes

E-Cigarettes & Vapes:

Vapes are a device that includes a battery, a heating element that heats the e-liquid into an aerosols (sometimes called a “vapor”), a cartridge or tank for the e-liquid, a mouthpiece or opening, and a rubber or plastic cap.

Can come in a wide variety of shapes, colors, and designs.



E-cigarette & Vape Caps:

Protective cover made of plastic or rubber material that fits over the mouthpiece or the top part of the device.

E-cigarette & Vape Pods:

Pre-filled or refillable cartridge that contains liquid and a metal rod (heating element) in the middle of the pod. Cannabis pods contain cannabis extracts or oils, while nicotine pods use e-liquid containing nicotine and other additives.



E-Cigarettes & Vapes (Continued)



E-Cigarette & Vape Batteries:

Comes in various sizes and shapes, ranging from cylindrical types to larger box-shaped designs, and are usually rechargeable and can be removed or replaced. Can be found on one end of the device, opposite of the mouthpiece.

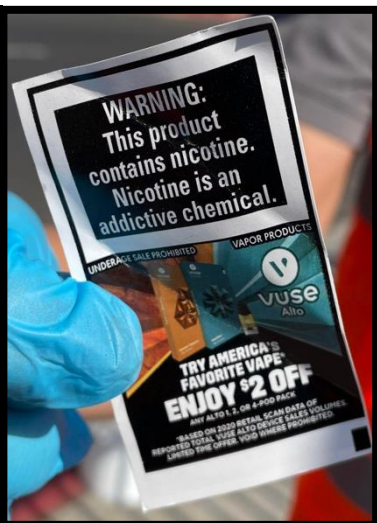


E-cigarette & Vape Mouthpieces:

Cylindrical and tapered component of the device that resembles a small tube or funnel. The user places this in their mouth to inhale vapor. It is usually made from plastic or metal.

E-cigarette & Vape Packaging:

Paper or cardboard carton that is the length of the device and/or holds accompanying accessories (for example, refillable pods). Often features eye-catching graphics, branding, and product information.



E-cigarette & Vape Advertising:

Any promotional materials aimed at promoting e-cigarette and vape use. Commonly include printed leaflets, handouts, and flyers often displaying captivating visuals, persuasive messaging, brand information, and product discounts.



Nicotine Pouches



Smokeless Tobacco Product: Nicotine Pouch

A small pouch that contains nicotine, designed to be placed between the gum and lip. It is typically white in appearance.



Product Packaging: Nicotine Pouches Packaging

Small containers made of either plastic or metal. The containers often have a hinged or screw-on lid.

Cannabis



Joints:

A slender tube filled with ground cannabis that is rolled inside machine or hand rolled paper. These come in various sizes and can even be infused with different flavors. It is often twisted or folded at one end and used for smoking cannabis.

Cannabis Edibles:

Edible items infused with cannabis, packaged to look like food or candy items. These can also have “cannabis”, “marijuana”, or “THC” labeled on the packaging, and in California, feature a small triangle symbol with a marijuana plant and an exclamation mark.



Cannabis Packaging:

Various containers used to package cannabis products. These can also have “cannabis”, “marijuana”, or “THC” labeled on the packaging, and in California, feature a small triangle symbol with a marijuana plant and an exclamation mark.



Cannabis Advertising:

Any promotional materials aimed at promoting cannabis use. Common materials include printed leaflets or handouts, often displaying captivating visuals, persuasive messaging, brand information, and product discounts.



Multipurpose



Hand Rolled Cigarettes:

Commercial rolling papers or other (i.e. store receipts) used to smoke tobacco or cannabis



Rolling Paper:

Thin, rectangular sheets made of various materials like rice, hemp, or wood pulp. They typically have a translucent appearance and are designed for rolling tobacco or cannabis into cigarettes or joints. Packaging for rolling papers is typically made of cardboard or plastic, depending on the brand.



Matches:

Typically comes in small, rectangular cardboard or paperboard boxes. The box may contain multiple paper or wooden matchsticks with red or white phosphorus tips.



Lighters:

Comes in various shapes, sizes, and materials. Most common design resembles a small, portable device that can generate a flame for ignition. Typically made of plastic or metal and often have a rectangular or cylindrical shape.



Torches:

A small, portable device that can generate a flame for ignition. Typically does not have commercial tobacco or cannabis branding.



Pipes:

Commonly used for consuming tobacco and cannabis. It typically consists of a bowl, where the tobacco or cannabis is placed, and a stem with a mouthpiece. Can be made of glass, metal, or ceramic and comes in different shapes, sizes and colours.

User-Defined

The User-Defined category is a flexible option for recording novel waste types or other tobacco-related features (e.g., locations) that are not part of the app's standard waste types. This category is intentionally open-ended to allow users to track items or features that are specific to their project goals or capture a new trend.

When to Use This Category

Use “User-Defined” when you want to:

- **Categorize tobacco product waste in more detail:** For example, you might want to separate items such as packaging, filters, e-cigarette components, or advertising materials from the predefined types listed in iKickButts.
- **Map tobacco product waste at specific locations:** Track tobacco product waste near sites, such as schools, tobacco retailers, or other locations relevant to tobacco policy or prevention efforts.
- **Track a new trend or discovery:** Track newly introduced tobacco products or brands; note patterns of co-use; map waste generated by other products sold by tobacco retailers (e.g., N₂O cartridges also known as “whippets” or laughing gas)

